

## #02 NEWSLETTER

## SHAPING THE CITY OF TOMORROW

With MIPIM just around the corner, we are delighted to share with you a few projects that embody the essence of our multidisciplinary collective. From the development of renewable energies via photovoltaic solutions, to the planning of more resilient territories, via the design of industrial and logistics buildings, AREP group imagines, transforms and builds the city of tomorrow at different scales.

01/10



## MARSEILLE, LES HALLES SAINT-CHARLES STATION, A NEW URBAN CLIMATE SHELTER

As part of the new Provence Côte d'Azur rail link, our team in Marseille is working hard to transform the underground station at Marseille Saint-Charles. Les Halles Saint-Charles is the visible part of this ambitious project, which aims to increase rail capacity while creating a new urban dynamic. This renewal will forge solid links between the various modes of transport: metro, bus station, future tramway. In partnership with Atelier Roberta, our team wants to design a space where nature and innovation meet. Les Halles will feature photovoltaic panels on the roofs, natural ventilation to reduce energy consumption, low-carbon materials and on-site recycling. The project also includes a large number of gardens, notably on the railway platform, which will create areas of cooler temperature.

02/10

## IN VIETNAM, INTEGRATING A FUTURE HSR RAILWAY STATION INTO ITS ENVIRONMENT

In Vietnam, in collaboration with our partners, we recently completed a pre-feasibility study for the future Hanoi terminal HSR station, Ngoc Hoi, which is destined to become a key hub in Vietnam's high-speed rail network. This project, supported by the World Bank, aims to integrate the railway infrastructure harmoniously into its urban environment while addressing climate issues. The main objectives include integrating national and urban rail networks, creating synergies between different modes of transport, and promoting sustainable and innovative solutions. The master plan emphasizes green infrastructure, such as a blue-green drainage system and public spaces that encourage biodiversity and social interaction.



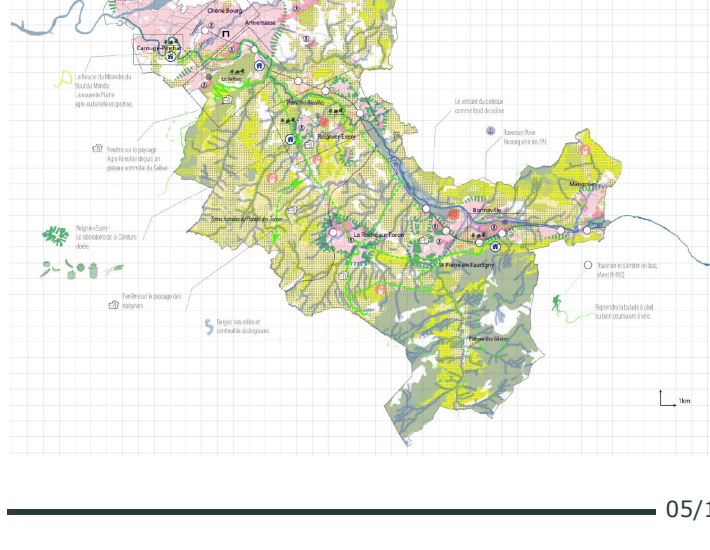
03/10



## MERGING RIVER AND URBAN LOGISTICS ON THE SEINE BANKS IN PARIS

A consortium led by Sogaris, to which we belong, has been selected by Haropa Port to renovate part of the former Magasins Généraux in the port of Austerlitz. A key part of Paris's industrial and production heritage, the redevelopment of this area is part of a long-term vision to create a multi-activity zone, combining leisure, retail and logistics activities to serve the city and its residents. In collaboration with the architectural firm Encore Heureux, our engineers are working with Sogaris to design a 6,000 m<sup>2</sup> space called "Les Amarres". Bioclimatic studies, a carbon footprint, re-use, and an energy strategy integrating the urban heating network as well as local electricity production... Environmental performance is at the heart of this project. It also includes the installation of air fans and natural ventilation on the façade, and takes advantage of the inertia of the historic concrete structure to ensure optimum comfort, even in summer, without the need for air conditioning.

04/10



## CROSS-BORDER TERRITORIAL VISION : DECARBONIZING THE GREATER GENEVA

The State Council of the Canton of Geneva, the Franco-Valdo-Geneva conurbation, the Republic and Canton of Geneva and their partners have reaffirmed their commitment to redefining a resilient and attractive territorial vision by 2050. Our urban planners have defined main planning challenges by cross-referencing the teams' analyses with the objectives of the Greater Geneva roadmap: protecting agricultural and natural areas, preserving land in the face of demographic growth, decarbonising mobility and strengthening territorial autonomy. Our team has been proposing a vision for 2050 based on scenarios of a desirable future, while identifying the actions needed to decarbonise the region, that are both realistic and ambitious.

05/10

## SUPPORTING THE TRANSITION TO SUSTAINABLE MOBILITY IN BRUSSELS

Drawing on our expertise in industrial mobility buildings, we are working with engineering consultancy Sweco to transform and refurbish a bus depot that will increase storage capacity for 450 electric buses in Brussels' Haren district. For the Société des Transports intercommunaux de Bruxelles (STIB), our team is also designing 55,000 m<sup>2</sup> of new facilities, including a maintenance workshop, the operations and training centre and a health centre. In order to pursue a strong environmental ambition, we plan to reuse existing structures, optimise photovoltaic energy production and preserve local biodiversity.



06/10



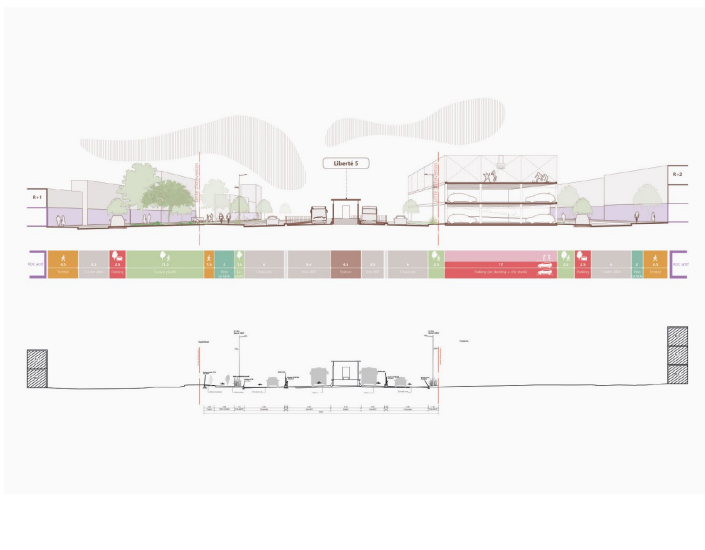
## IN CHINA, AN INNOVATIVE FACTORY REFURBISHMENT PRESERVING HERITAGE

Our designers in China have transformed HYGEE's former satellite factories into medical laboratories while preserving their industrial heritage. This project reconciles the memory of the site with innovation by offering a flexible, optimised space on a constrained site. Inspired by the aerospace industry, the building's design is based on a "medical module" with three exhibition capsules linked by a light steel bridge. This immersive journey invites visitors to explore the building from new angles, between its industrial past and its scientific future.

07/10

## DEVELOPING URBAN AREAS AROUND BRT STATIONS IN DAKAR, SENEGAL

The CETUD Conseil Exécutif des Transports Urbains Durables de Dakar (Dakar Executive Council for Sustainable Urban Transport) has entrusted AREP with the feasibility study for the management of the Bus Rapid Transit's public spaces in order to design an urban strategy adapted to the creation of the line, as well as the public spaces and special facilities specific to each of the sites where the line will be built. The commissioning of the Dakar BRT, an 18.3 km mass transit infrastructure that is unique in West Africa, is one of the key projects in the transformation of Dakar metropolitan area and the transition to cleaner, less polluting, faster and more comfortable mobility for its residents. Located at the heart of a transport and infrastructure network undergoing major change (extension of the TER line, restructuring of public transport) in the heart of the Dakar conurbation, the BRT line will redesign urban spaces and living spaces in a city characterized by complex urban development dynamics.



08/10



## SOLVEIG, THE TRACK SOLARISATION PROTOTYPE DEVELOPED WITH THE SNCF GROUP

Earlier this year, we unveiled the SOLVEIG prototype on the unused tracks at the Achères technical centre. This innovative system enables the reversible deployment of solar panels on unused tracks, reducing the carbon footprint of ground-mounted solar installations and simplifying the procedures required for their installation. The SOLVEIG prototype marks a significant step forward in a series of innovations and experiments in the field of renewable energies carried out by our teams for the SNCF Group.

09/10

## THE OPÉRA BASTILLE CHOOSES OUR CONSULTING &amp; PROJECT DEFINITION TEAM FOR ITS TRANSFORMATION

The Opéra Bastille is getting ready for its makeover! AREP Consulting, Project Definition & Management and our co-contractors Michel Fayet, scenographer, and Kahle Acoustics are assisting the Opéra national de Paris with the programming of future renovation works architectural and technical. This ambitious assignment will put our expertise in complex structures, refurbishment and work on occupied sites to the test. Comprising 45 professionals, our Consulting and Project Definition team helps clients identify their needs, define the objectives of their projects and assess their technical and economic feasibility.



10/10



## HELPING PASSENGERS FIND THEIR WAYS IN THE GREATER PARIS EXPRESS

Our designers are working on the roll-out of new signage for several metro stations on the Grand Paris Express, including the new Line 14 Villejuif Gustave Roussy station for the Société des Grands Projets (SGP). This station is the third, after Orly and Saint-Denis Pleyel, to adopt the standards and signage elements of the Grand Paris Express. From the sketch phase to the deployment of the signage, we have worked in constant collaboration with the project's architects. The signage studies are continuing in order to prepare future users of the Grand Paris Express, and offer them a seamless and natural wayfinding experience in the stations.

## IN OUR NEWS...



The AREP group's international portfolio is available [here](#).

The [engineering book](#) is also available on our website.

We will be present at the [UITP Summit](#) in Hamburg in June 2025, the largest transport exhibition in Europe.

The AREP group will be present at [MIPIM](#) from 11 to 14 March.



# #01 NEWSLETTER

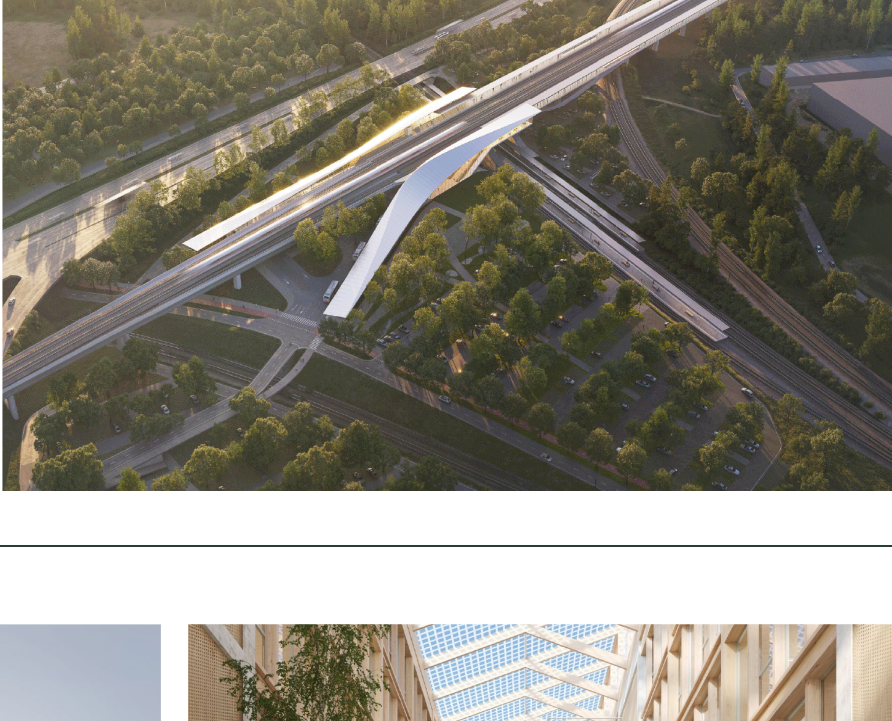


For more than twenty-five years, the AREP Group has been using its experience as a major player in mobility to help mitigate and adapt to climate change. We advocate sustainable, sufficient and realistic solutions, supported by the EMC2B approach (Energy, Materials, Climate, Carbon, Biodiversity), and campaign for integrated design in the public interest. Research, innovation, heritage enhancement and alternative partnerships illustrate our ambition: to invent a resilient and desirable world. This mission is brought to life through concrete, meaningful projects that are driving change in our regions. In our newsletter, we give you an overview of our latest projects and our commitment to meeting the right needs at every level, while respecting the context of each project.

01/10

## MINIMIZING THE ENVIRONMENTAL FOOTPRINT OF AN HSR STATION

At the crossroads of the European lines of the future Berlin-Vienna TGV, we are designing the new Jihlava station in the Czech Republic. The minimalist terminal has been designed to keep its environmental footprint to a minimum, while offering the best possible conditions for future users. The architecture is measured and expressive, a landmark in the landscape that adapts to the topography of the site and uses existing infrastructure to limit the need for additional buildings.



02/10



## A MODULAR OFFICE COMPLEX FOR THE LUXEMBURG RAILWAYS



For the offices of the Luxembourg railways, our teams designed a rhythmic, modular building with elements organised on either side of a central hall that reflects the railway spirit of the company and allows flexibility of programmes while offering a comfortable, bright space. Acoustic comfort was one of the major challenges of the project. We limited noise from the outside by installing high-performance façades incorporating a double-skin complex to meet the desired acoustic requirements.

03/10

## A NEW BIOCLIMATIC RAILWAY STATION IN NICE, DESIGNED FOR MULTIMODALITY

With a forecourt transformed into an urban square and a 4,200 m² green space, the future garden-station at Nice airport, in the south of France, is designed to be one of the first bioclimatic stations. Located close to the brand new Nice Saint-Augustin bus station, it will be at the heart of a multimodal interchange hub offering a full range of connections. Symbolising the project, the bioclimatic canopy equipped with photovoltaic panels will regulate the station's temperature and luminosity to provide greater comfort for its users. This project, characteristic of the necessary adaptation of our rail infrastructure, will see the light of day in 2028.



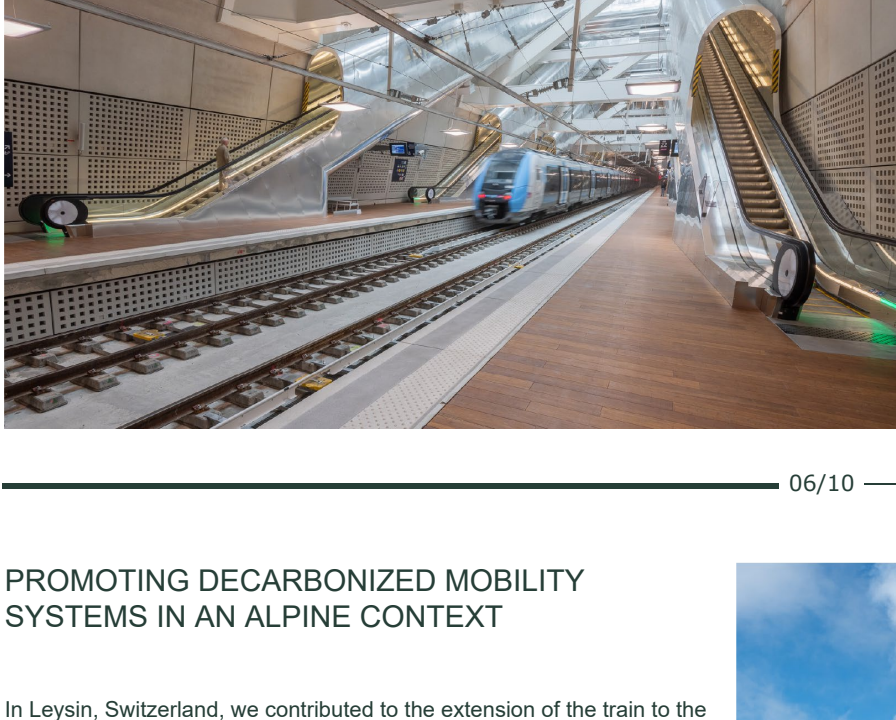
04/10



## ADAPTABLE & FLEXIBLE APPROACH FOR BELGIAN RAILWAY STATIONS

In Belgium, we have designed station typologies for the Belgian National Railway that are adapted to the changing needs of the rail network, which comprises 554 stations and 3,800 trains a day. Continuing our work on public transport in Belgium, we won a tender from the Brussels Mobility public transport authority to renovate part of Beekkant station, starting in 2026. Thanks to a flow study and a minimal intervention on the existing structure, this modernisation, carried out in harmony with the challenges of the EMC2B approach (natural ventilation and lighting, reuse, flow studies, etc.), will improve user comfort.

05/10



## ON TIME FOR THE PARIS GAMES: TWO UNDERGROUND STATIONS ON THE EOLE WEST EXTENSION

Twenty years after the underground stations at Haussmann and Magenta, two new stations, Porte Maillot and La Défense, were inaugurated on the Eole network, just before the summer sports events in Paris. These stations, designed as places for exchanges, are built around a central void offering a direct view of the platforms as soon as you enter. This extension anticipates the arrival of the Grand Paris Express, which will improve connections between the suburbs without having to pass through the centre of Paris.

06/10

## PROMOTING DECARBONIZED MOBILITY SYSTEMS IN AN ALPINE CONTEXT

In Leysin, Switzerland, we contributed to the extension of the train to the departure point of the Berneuse gondola lift during the design phase of the project. This 1.3 km project, which is entirely underground, includes three new stations. The project aims to improve connectivity between public transport, the centre's shops and leisure facilities. Together with our local partner, our aim is to optimise access to the community by encouraging the use of public transport in a mountain environment, while keeping the environmental impact of the project to a minimum.



07/10



## AN URBAN CANOPY FOR BEIJING TONGZHOU NEW GREEN STATION

In Beijing's Tongzhou district, our teams have designed a transport hub on the Beijing-Harbin railway line. This project combines the essence of Beijing's traditional architectural elements with the concept of the 'urban forest', integrating with the surrounding green spaces to provide a new ecological identity for this secondary hub. The building is based on lightweight structures combined with techniques such as wind corridors, water systems and photovoltaic panels to optimise user comfort and meet environmental challenges in a specific context.

08/10



## PARIS AUSTERLITZ: EUROPE'S LARGEST SCAFFOLDING GIVES WAY TO LIGHT AND BRIGHTNESS

With a length of 280 m and a span of 52 m, the double-sloped roof of the Great Hall at Austerlitz station, a listed historic monument, represents an exceptional architectural and technical challenge. To carry out the renovation, our teams deployed 12,000 m² of scaffolding while maintaining the daily flow of 68,000 passengers. Today, the Hall has been restored to its former glory, and the station has been bathed in light, thanks to the renovation of the 15,000 m² glass roof. This project won the Eiffel Prize in the "Travel" category.

09/10



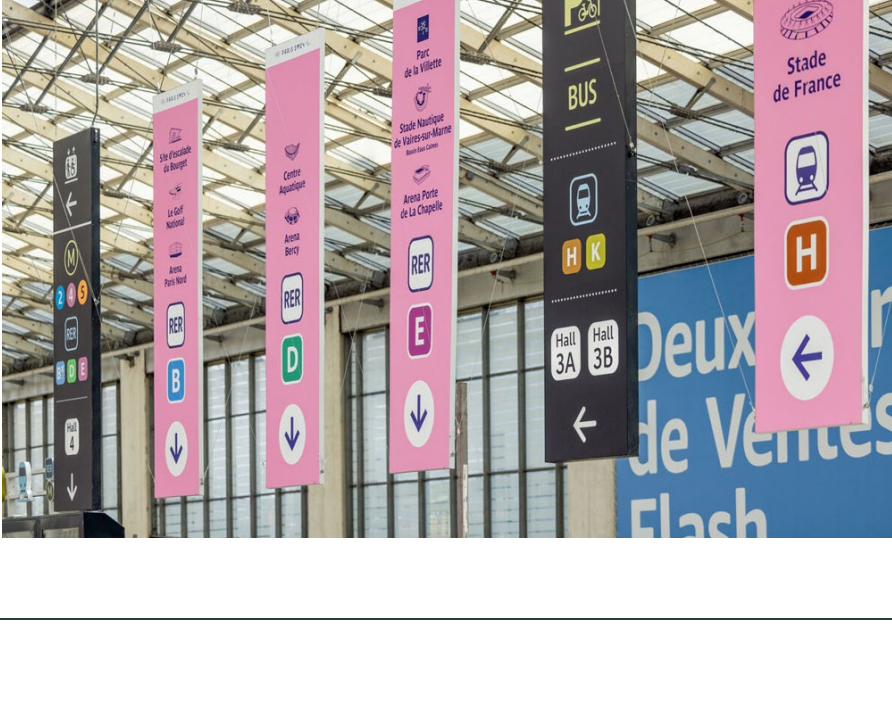
## A SOLAR BICYCLE PARKING FACILITY FOR EUROPE'S BUSIEST RAILWAY STATION

The renovation of Paris-Nord station aims to improve the passenger experience, with new vertical links and redesigned signage to serve users. In addition to these improvements, a brand new bicycle hall has been built, offering more than 1,000 parking spaces. This solar-powered bicycle hall, with its light, frugal and minimalist architecture, is designed to encourage the use of active mobility while promoting renewable energy sources in the heart of the city. It's a project that's helping to transform the district, turning a previously isolated area behind the station into a place where people can live and move easily.

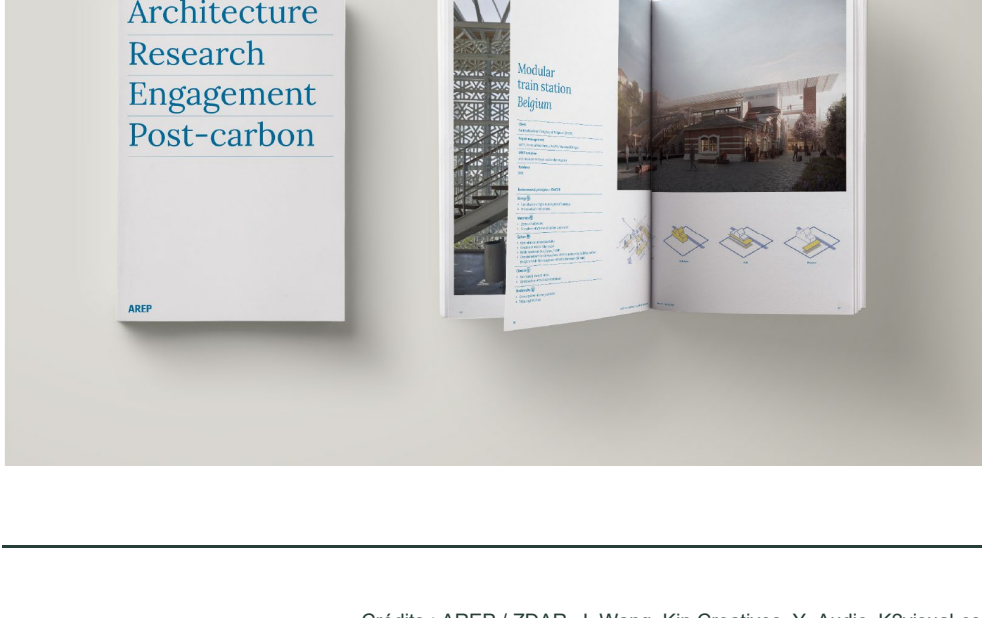
10/10

## WAYFINDING AND SIGNAGE TO EASE TRANSIT DURING LARGE EVENTS

For AREP, signage is above all a matter of coherence, convergence and continuity of systems, signs and user paths. During the major sporting events that punctuated 2024 in Paris, this overall approach harmonised passenger information systems, signage, services, the role of assistants on the ground and the digital ecosystem.



## AND ALSO IN OUR NEWS...



**Awards :**  
Our award-winning stations include the Eiffel Prize for the Great Hall of Paris-Austerlitz, the Versailles Prize for Toulouse Matabiau, and the Circular Building Trophy for reuse at Paris-Nord. AREP was also named one of the 100 Architects of the Year (Korean Institute of Architects) for its Budapest-Nyugati station.

**Events :**  
Our President Raphaël Ménard presents the Light Energies exhibition 'hors les murs' at the University of San Sebastian (Spain) One of our studio directors Michelle-Ange attended the *Biennale dello Stretto* in Calabria for a round table discussion on the new challenges of urban mobility in Mediterranean cities (Italy).